

Cabela's
WORLD'S FOREMOST OUTFITTER®
Hunting • Fishing • Outdoor Gear

Holiday Walleye



Holiday Walleye

This seminar was derived from three days fishing on Lake Winnipeg last December 2012.

Just after Christmas the weather moderated and rose into the mid 20's or -5 to -12 C.

We fished the west side of Lake Winnipeg using Chalet Beach road as our point of access and egress.

Parking in the small parking at the end of Chalet Beach rd. lot we left to go out on the lake with our snowmobiles

We would start out in the dark (approx. 7:30 am).

Most days were completed by 2:00 p.m.

I wouldn't be able to do any of this without the support of my wonderful wife ; Kari, thank you very much for your love and support!

Thank you to all the folks (mentioned by LOGO on the opening page) who have sponsored Cat Eye Outfitter.

Special thanks to;

Cabela's Canada — Peter Tully

Ice Team/Clam Corp. — Matt Johnson

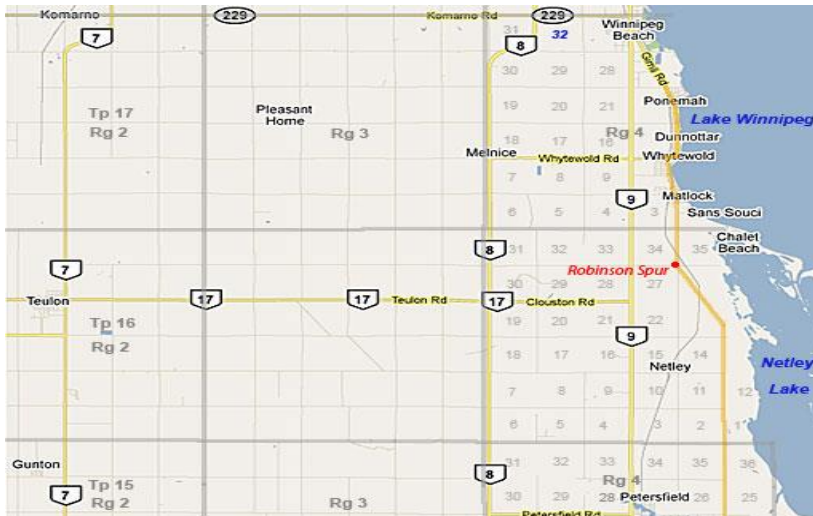
Vexilar — Cory Studer

- Holiday walleye

Where

Access points (west) are
Chalet Beach Rd. or Garner
Road

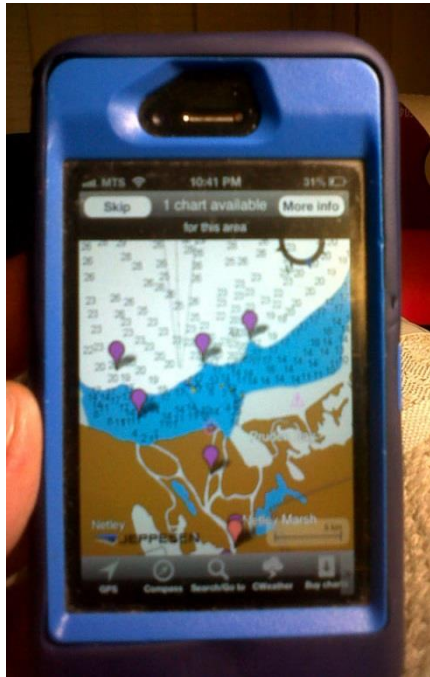
(east) -mile 100 off of 59
highway, 2 miles past the
Beaconia turn off, go west
about 3 kms AKA Balsam
Harbour



- Holiday Walleye

Where

Having a map of where you're fishing is not only a good idea but it's a matter of safety on big "Windy"

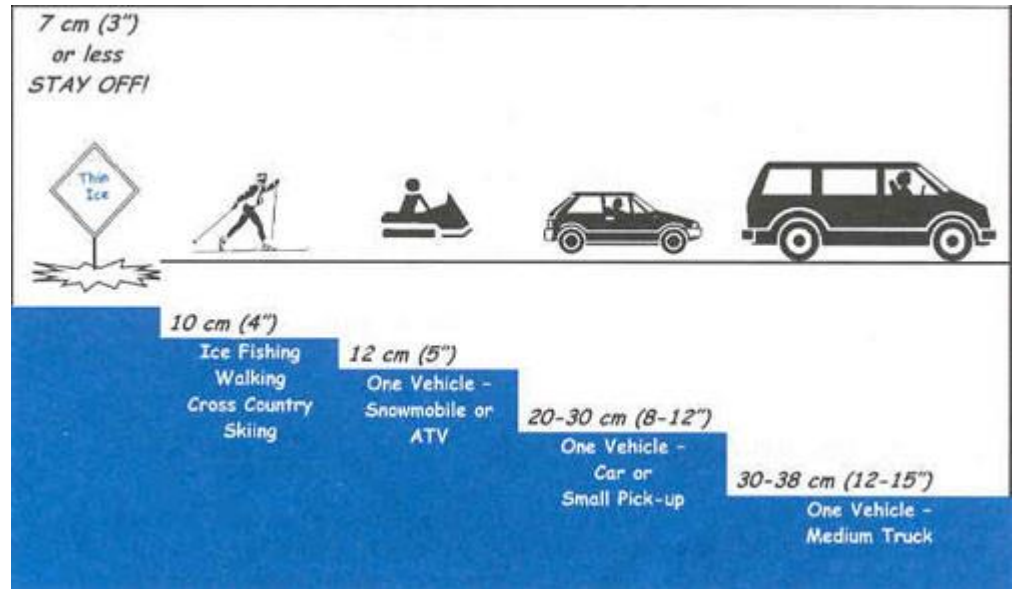


• Holiday Walleye

When

Surprisingly the Red River is often fished before Lake Winnipeg.

By the third week in December lake Winnipeg is usually safe to fish



- Holiday Walleye

How

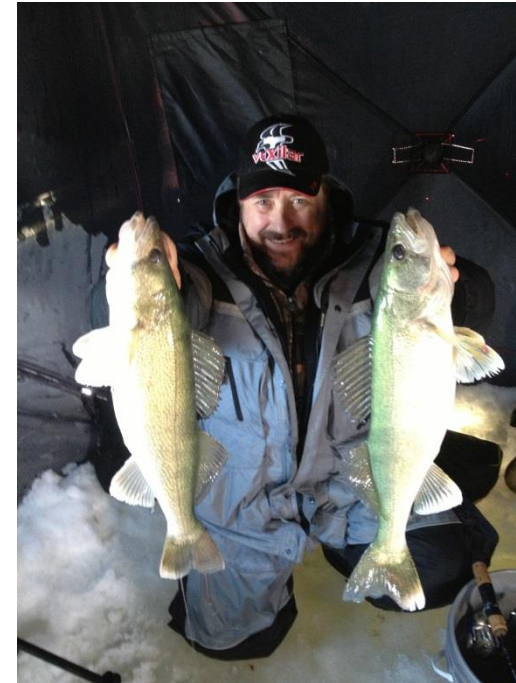
How will depend on a whole number of factors

Visit different bulletin boards for what's working now...

Read articles on what's involved in having a successful day out on the water...

Go with someone who has some experience..

Get out there!



- Holiday Walleye

How?

As many anglers as there are out there any given day will be able to give you an answer on the “HOW” question.

Here you can see walleyes caught with a forage spoon on a Clam True Blue series R&R combo that was tipped with a live minnow.



How

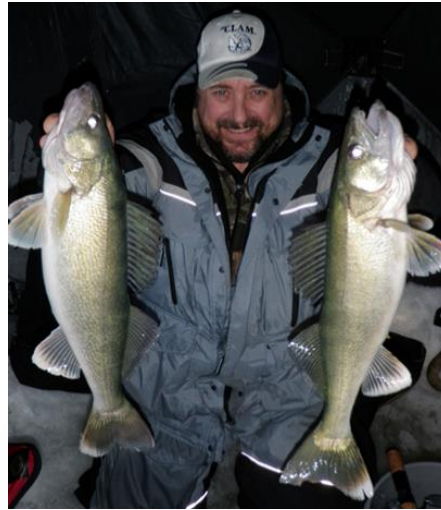
Think about three hook possibilities

- 1) Jigs (short & long shank)
 - 2) Flash spoons – color/size
 - 3) Lipless rattle baits
- and

BAIT – lots of it !

- 4) Some folks add a jigging rap style of bait to this list - Stange

• Holiday Walleye



Lures that work

The list keeps growing from year to year.

With each style I'll consider the extras that seem to convert more fish from being lookers to biters

- Size; size down when there's a sudden drop in pressure or when we get into the heart of winter
- Colour ; some days even the subtlest change in colour makes the difference . Remember walleye do have a range of colour they do see...
- Glow; For early morning or the end of the day. We seem to get bit earlier or later. Even sometimes during the day glow works
- Rattle;/flash Not always but definitely keep it in mind
- Scents; Can't hurt!
- Stingers...don't leave home without them.



How

Electronics do make a significant difference. A camera barely works on the best of days but a good flasher will make your day that much more successful when fishing Lake Wpg.

Watch the bottom most days but there are days when the walleye will be up in the water column



- Holiday Walleye



New Electronics

FL X-28

- digital depth,
- Auto Range,
- Two zoom zones,
- battery status,
- FIVE color palettes to select from for maximum visibility,
- five foot depth range adjustments starting at 10 feet,
- Maximum range of 300,
- Day and Night display brightness settings,
- Low power options for fishing in super shallow water,
- Weed Mode for better performance while fishing in weeds.



How

Inside or outside? Warm enough or too cold outside are important considerations. New clothing options and ice house tech has made it easy either way . Even new pop ups are easy to move a few times a day.

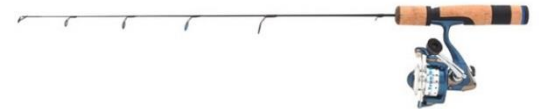
- Holiday Walleye



Rods 'n Reels

A variety of rods will be to your benefit

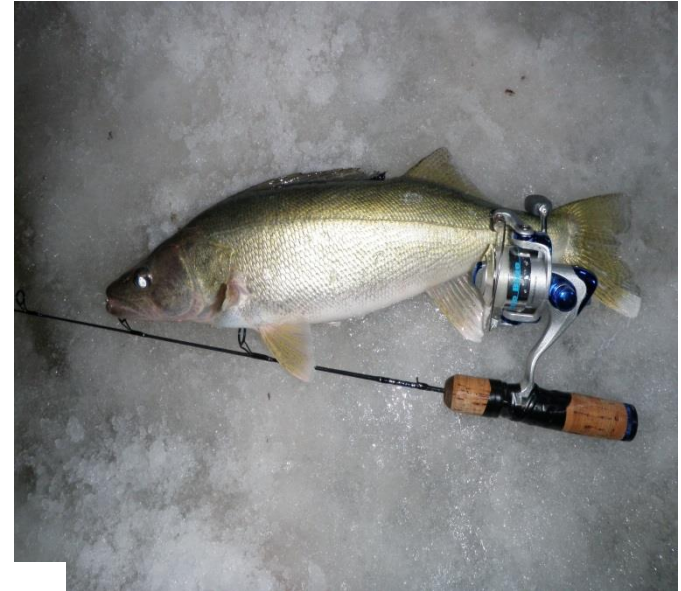
- Ceramic eyes are great but when frozen be careful they do separate from the metal they're glued to
- Medium to medium light is the range of power that I'll work with when fishing inside
- Outside I'll fish longer and medium to medium heavy weight rods
- I prefer larger eyes and metal guides if available when fishing outside.
- When fishing lipless cranks I'll spool up with braid and a rod that has faster action with a lot more backbone
- Reels with larger spools help with line twist. Even fishing with spooler type reels helps get the twist out.
- an ultra light rod "dead-sticked" can be an advantage on a light bite day



- Holiday Walleye

How

A big part of getting out there is doing so comfortably. Gone are the days where equipment was a reason why you didn't really feel like going.



There are lots of accessories to make your fishing day that much more fun

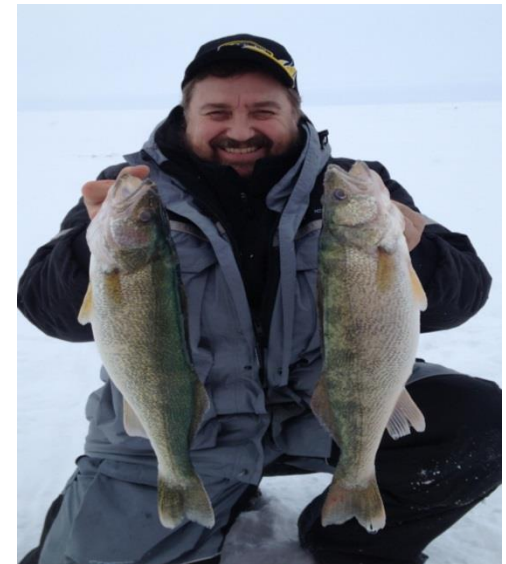
- Heaters
- Rod holders
- Fans and lights
- Chairs
- Ice scoops
- Tackle organizers
- Sleighs



• Holiday Walleye

Where to find 'em

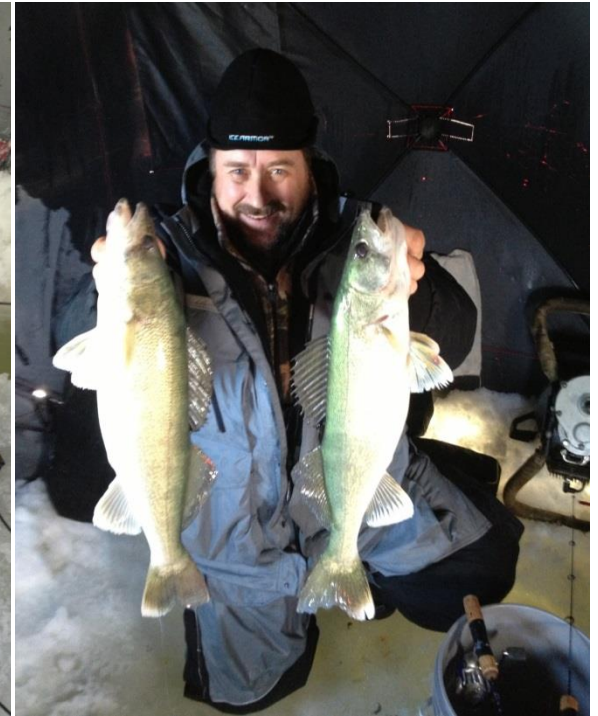
1. First ice ; You'll find them almost where you left them before the ice went on. On lake Winnipeg they'll be shallower in the AM deeper during the day. Move...
2. Mid winter they'll go deeper and hang out on edges , bumps, underwater points near deeper water
3. Late winter they'll move back shallower near spawning rivers or lake entrances.



How to catch 'em

1. Run and gun;; Drill ten holes for two guys fish them for 45 minutes and move
 - good for warmer weather days
 - bad for breaking equipment when cold
1. Hunker down ; Set up two maybe three times per day. Concentrate on the water column and how walleye react to your presentation
 - good idea when it's cold
 - fish move so you'll hit or miss 'em with this approach

• Holiday Walleye



How to do it with ...

1. Flash spoon : jig and watch a walleye's reaction on your sonar
2. Lipless crank is ripped and held. Usually on the hold or at the bottom a rip you'll get bit
3. Jig (dead sticked); leave it in a holder or on a pail – maybe jiggle
4. Alternate from aggressive to nearly no motion with a jigging rap

There are a lot of options to match the mood of fish on any day

• Holiday Walleye



- Holiday Walleye

Après fishing.....

Walleye are a renewable resource. Keep a few and enjoy a healthy nutritious meal after a day out on the water.

Pan fry or deep fry – one of Winter's true treats!



Sustainability



Dan Kiazky Cat Eye Outfitter



Box 33 Gr#224 RR#2

Selkirk MB

R1A 2A7 – our new summer address

Call toll free 1-888-228-3933

We are on Facebook @

<https://www.facebook.com/dan.kiazky>

<https://www.facebook.com/CatEyeOutfitter>

And we are on Youtube @

www.youtube.com/user/CatEyeOutfitter

Instagram

cateyeoutfitter

And Google+

Visit our website often for new articles about ice fishing adventures and techniques and tips
<http://www.cateyeoutfitter.com/intro.php>

Guided ice fishing trips are available throughout the holiday season as well as most weekends. You need to call at least two weeks in advance to book an ice fishing trip.

visit

www.cateyeoutfitter.com